

# Emergency Operations Centers (EOC)



## Project brief introduction

iSEMC EOCs assist you in the vital task of emergency or disaster response and management. Your EOC personnel must be able to quickly analyze information to inform their operational decision-making and allow them to deploy resources effectively in response to emergencies.

Having a clear and crisp video display is an essential tool for your EOC. They give your people the ability to view, interpret, and use information effectively and with speed.

## Description

### Optimized Emergency Response 01

When disaster hits, you need to equip your EOC personnel with advanced visualization tools so they can assess the situation and extent of the hazard. You also need to have innovative control room technology for risk analysis and response team steering. iSEMC's EOC visualization and collaboration solutions support decision-makers and emergency operators. They help you maintain clear situational awareness and support critical decisions at critical times.

### Streamlined Emergency Response 02

Regardless of whether your operations support law enforcement, firefighting, medical emergencies, or others, you need to trust your visualization system. Our visualization and collaboration solutions will streamline your emergency response capabilities by providing your operators and decision-makers with the information they can trust. iSEMC can provide you with an LCD, LED, or a rear-projection video wall depending on your needs. We will provide it at a cost-effective price, and it will serve your organization well for many years.

### Fast Response and Resolution 03

Your ability to respond quickly and effectively to a security incident will be the determining factor in whether you resolve the security issue. You need to have the appropriate information presented in the best way. iSEMC's visualization solutions allow you to collect and display security information and incident data in real-time and in a workspace that fits your needs. You'll have access to all the information you need from a

Control Room

Solutions

## Control Room Collaboration

iSEMC solutions offer you the facility to safely share video and other data across your organization, both internally and outside your control room. Whether consulting with remote decision-makers or communicating with response teams in the field, iSEMC visualization and collaboration solutions will give you the situational awareness you need.

Our media distribution platforms are network-centric, come with open interfaces, and are compliant with industry standards. Its modular and flexible nature means you can scale the system as your requirements change. Installing third-party technology is straightforward, increasing the utility value of our systems.

## Features

### Ultra High Definition Display

Appropriate designs can be made according to the project's real needs; the display system, mainly composing DID screen, DLP splicing screen, LED display screen with little space, the system can support multiple 1080P HD input sources and max input resolution supports up to 3840x2160@60Hz. Single channel max output resolution supports up to 3840x2160@60Hz. It also supports high resolution background map, up to 65535x65535 pixels.



### Real-time video monitoring

According to the different monitoring demand, location and corresponding deployment scenarios, the front camera can be connected to the monitoring platform through the network. When we meet large amount of data, 24 hour uninterrupted supervision will be managed by disk array storage and real-time monitoring. The control program of scheduling system for all types of data is the key to the dispatching work, video wall display system continuously work for 7x24 hours, to ensure the timeliness of the scheduling and control.

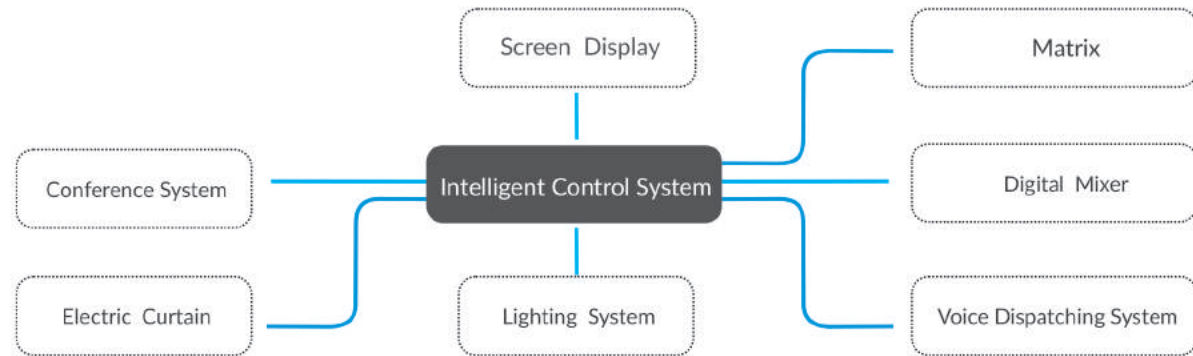


### Preset management

The research and development of contingency plans can be carried out via an integrated security management platform, to realize input and linkage settings of various contingency plans. A resource directory can be formed through the abstraction of pre-arranged data elements and information resources. The integrated security management platform can be automatically associated with the corresponding contingency plans in the event of different police information. This is more convenient to help the management to make decision.

### Multiple system centralized control

iSEMC command center system solution adopts advanced design concepts and products with leading technologies, plus of intelligent centralized control system, conducts centralized control for various systems, including large screen display system (DLP large screen / LCD splitting /LED display screen etc), video processing system, voice dispatching system, command and control system, system of sound pickup and sound reinforcement, to achieve information mining, assistant decision making, communication and command, centralized control; thus, the operation is more simple and convenient



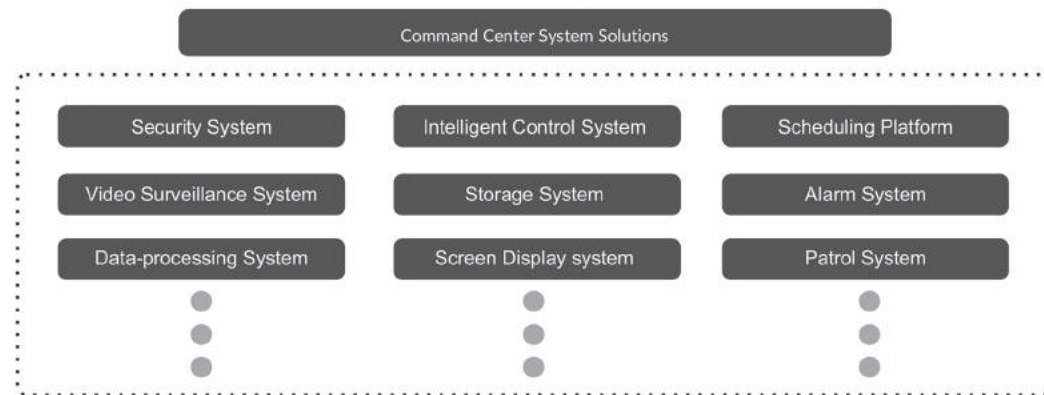
### System visualization

Compared with traditional command systems, the iSEMC command central system realize visualization, and all subsystems are presented in the way of pictures, data, video, software interface; thus, the system is more intuitive and image.



### Compatible with third-party devices

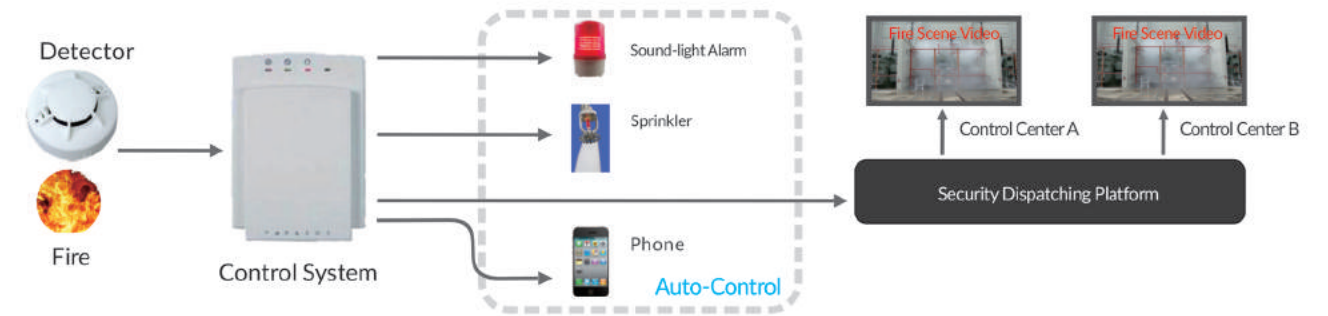
The system can be seamlessly connected with third party devices or software, to achieve the overall scheduling and control.



Control Room

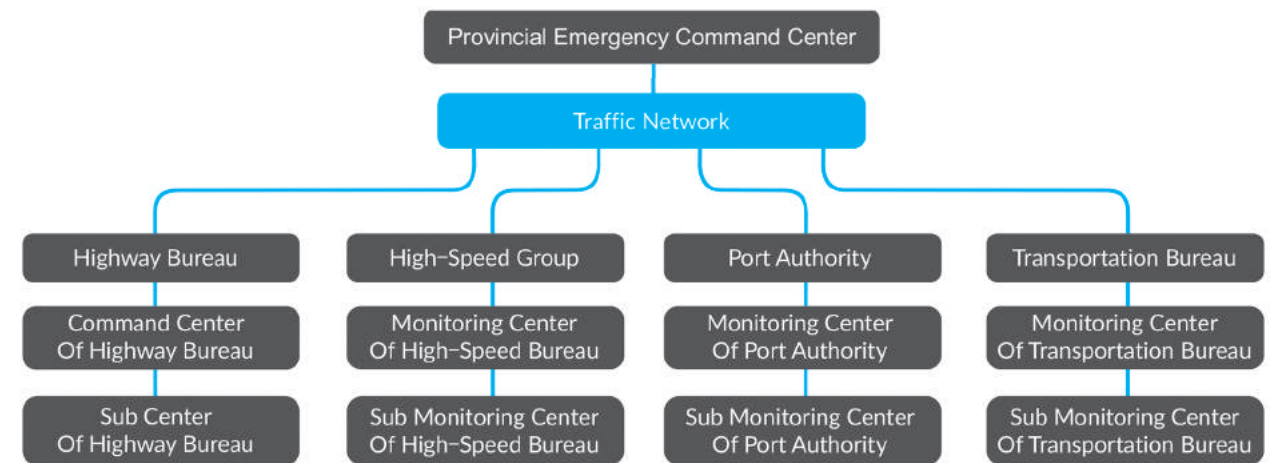
### Intelligent linkage control

When several devices needing control, the traditional manual control needs controlling multiple systems respectively. Equipment operation and switching speed depends on the level of personnel operation, needing for special control. The system can realize the intelligent linkage control of equipment by the corresponding logic, not needing manual operation.



### Multi-level scheduling

The system combines voice, video, data and business flow as a whole, via IP network; a whole set of system can be dispatched in ministerial, provincial and municipal centers respectively by the multi-stage deployment mode. The multi-level real-time intercom of command center can be realized by dispatching equipment with IP mode access to the command center.



### Decision-making support

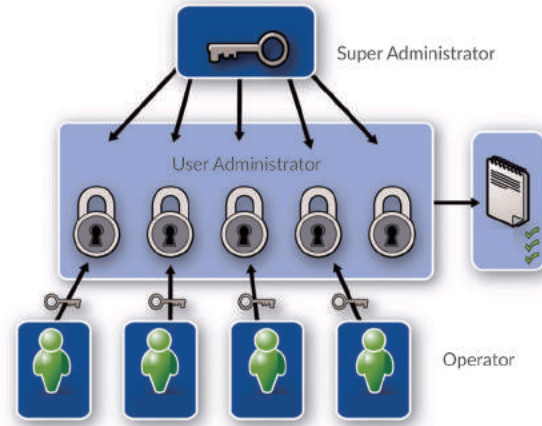
Decision-making support collects information for HD display system: all kinds of information collected and arranged by the system, plus of analysis calculation results of various models are shown in the most simple and intuitive form according to the needs of the decision makers, to help decision makers quickly and accurately understand the current situation, analyze the pros and cons of various scheduling schemes, as well as help them better to make the right decisions.



### User privilege management

User management supports various users, such as super administrator, user administrator and operator. Different users can be assigned different permissions for managing subsystem and equipment control configuration, such as: image browsing, loud mirror control, video and image playing, TV wall operation etc..

Support authentication modes including user name plus of password, or USB Key, or user name, password +USB Key.



### Stable and reliable

The system is stable and reliable because of adopting mature technologies, not infected with the virus; it has been successfully applied to a number of projects, with mature project experience.



### Wireless Sharing

Wireless transmission can wirelessly transmit signals such as local computers, IPADs, and smart phones to the display terminal

### Network Conference

Network conferences can share resources in multiple conference rooms through the network, and transmit signals to each other to achieve centralized management and distribution of audio and video

### Video Wall Splicing Control

Built-in video wall splicing function, supports arbitrary opening windows, zooming in & out, roaming, stretching, etc.



Control Room

Solutions

Beijing Lema Technology Co., Ltd.  
Tel:+86 10 82749250 | Fax:+86 10 82749250  
Email:info@isemc.com | Website:www.isemc.com

iSEMC