

VK Lite-S

Video Wall Controller

Powerful Video and Image Processing Device





VK Lite-S

VK Lite-S video wall controller is new generation professional video image processing product which is based on the development of multi-windows, ultra-high definition and visual display control technology. Compare to other video wall controller in the market, VK Lite-S supports ultra-high single-channel bandwidth, reaching 6.5G,so that there is a significant advantage on the processing speed and professional display control. Adopt RS232+LAN interface control, and configure DVI and HDMI input/output boards,support up to 128 scene save and recall,to meet a variety of professional system application requirements.



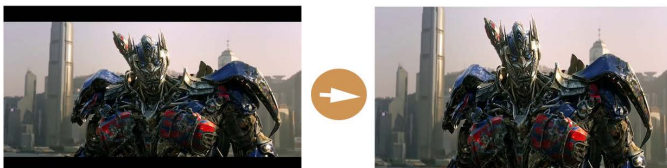
VK Lite-S

Video Wall Controller

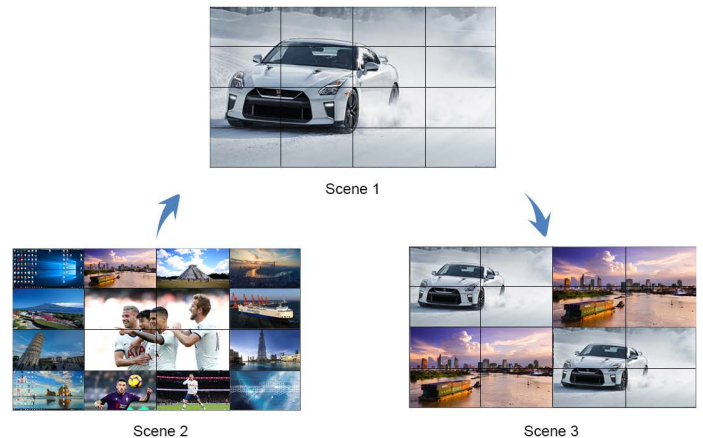
FEATURES

- Pure-hardware FPGA Array, modular design, parallel video processing hardware systems;
- Hot-swappable for I/O modules, control modules, easy to upgrade and maintenance;
- DVI , HDMI input and output;
- Opening 2 windows on each one screen;
- Up to 4 video wall groups control on single controller and work with variety of display terminals such as LCD, DLP, projector;
- Scene management, including save, switch, recall, recycle, Maximum support 128 scenes;
- Variety of control methods such as RS232, Network and compatible with third party control system;
- Multi-user control management, software can be set through the operation authority, according to the authority level to develop different operating functions, different levels, different operating privileges, and can be set at any output authority range;
- C/S visualization control platform, support roaming, overlay, zoom in/out, multi-window switching;
- Picture-in-picture, signal clip and a variety of display modes such as split screen, full screen and combination screen;
- EDID, customize the output resolution according to the physical resolution of the display system;

RELEVANT FUNCTION INDICATION



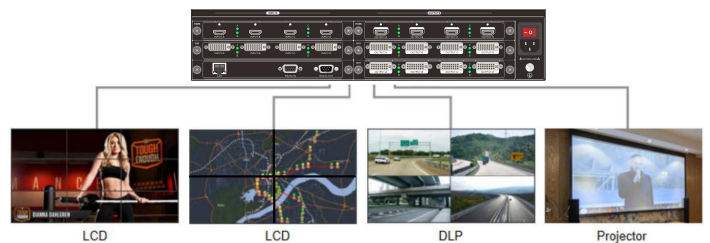
• Signal Clip



• Scene Switching

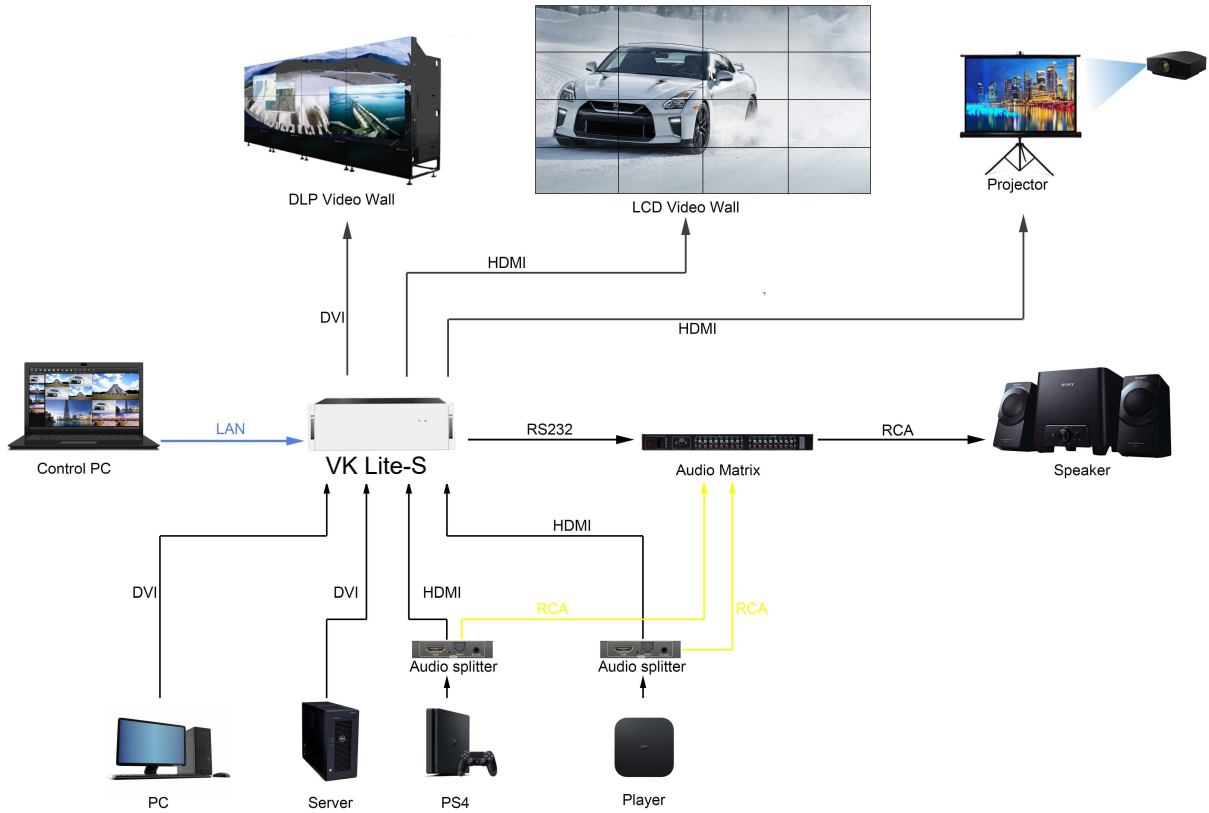


• Third-party Control



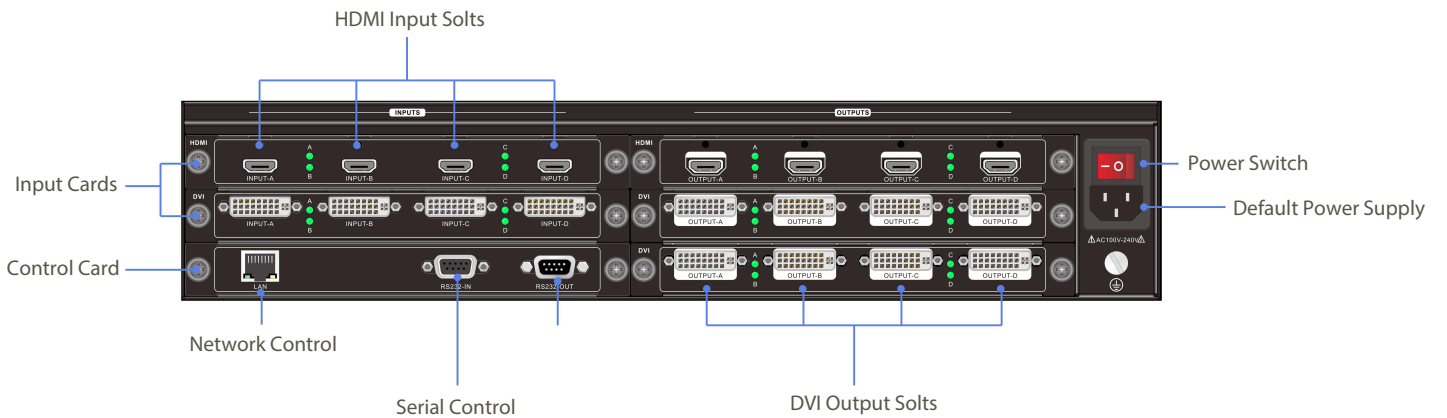
• Multi-group Control

DIAGRAM



Input: DVI/HDMI | Output: DVI/HDMI
 Control: serial, network, third-party control system etc.

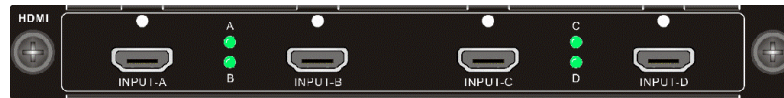
PRODUCT STRUCTURE



INPUT CARDS



Quad-Channel DVI Input Card



Quad-Channel HDMI Input Card

OUTPUT CARDS



Quad-Channel DVI Output Card



Quad-Channel HDMI Output Card

SPECIFICATIONS

Device size	2U		3U	
	Input	Output	Input	Output
2 Windows / Screen	8	12	20	16

Product Hardware Information	System structure	Pure hardware FPGA architecture
	Start up	<8s
	Operating system	No CPU and operating system
	Board type	Pure hardware pluggable, hot-swappable structure
Input/Output Signal	Input type	DVI,HDMI
	Input channel	1080P up to 20 channels
	Output type	DVI,HDMI
	Output channel	1080P up to 16 channels
Image Processing	Display mode	Roaming, overlay, zoom in/out, multi-windowing, scene switch, PIP, full screen and combination screen
	Scene/Signal switching time	Millisecond-level switching
	Number of signal copy	Up to 16
	Max input resolution	1920*1200@60Hz
	Max output resolution	1920*1200@60Hz
	Single-screen window	2 windows on one screen
	Hot-swappable	Support
	Control structure	Software /Hardware
	Maximum scenes	128
	Control method	RS232/Network and compatible with third party control system
Control Function	Management mode	C/S
Stability	Safety	Hardware structure, no virus interference
	Continuity	365 days, 7x24 hours operation
Working Environment	Operating temperature	-15~60℃
	Storage temperature	-30~75℃
	Operating humidity	10 to 90% without condensation
	Storage humidity	5~95% without condensation

iSEMC

Beijing Lema Technology Co.,Ltd.
 Tel:+86 10 64912688 | Fax:+86 10 64912688
 info@isemc.com | www.isemc.com